

REV	DATE	REVISIONS	REF.
1	2.19.01	REVISIONS PER DEVELOPER.	JG
2	3.08.01	REVISED TRASH CORRAL.	JG
3	5.10.01	REVISED PER CLIENT.	

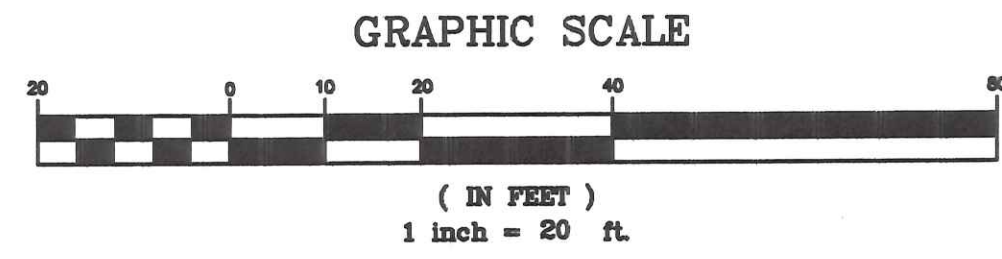
SCALE: 1" = 20'

SURVEY

VAN ATTA ENG., INC - 245 W. ELMWOOD DR - CENTERVILLE, OHIO 45439 - 1.01

NOTE:  
STORM SEWER INSTALLATION TO BE  
COORDINATED WITH THE INSTALLATION  
OF THE 18" STORM MAIN.

G:\P\NAPOLEON\MCDONALD\S.DWG, MAY 10, 2001 - 07:43:22



INGRESS/EGRESS  
EASEMENT  
HERITAGE TOWNE CENTER  
SLIDE 266A & B

R=20.00'  
I=90°00'00"  
A=31.42'  
Lch=N44°59'49"E  
~28.28'

LOT #3  
HERITAGE TOWNE CENTER  
SLIDE 266A & B  
1.2191 ACRES

R=20.00'  
I=90°00'00"  
A=31.42'  
Lch=N45°00'11"W  
~28.28'

CB#21  
TOP=681.50  
12" INV=678.50

INGRESS/EGRESS  
EASEMENT  
HERITAGE TOWNE CENTER  
SLIDE 266A & B

CB #1.3(2-2B)  
TOP=683.50  
12" INV=681.00

0.27Ac.

CB #1.0(2-2B)  
TOP=683.40  
15" INV=679.78

CB #1.1(2-2B)  
TOP=683.60  
15" INV=680.00

CB (BY OTHERS)  
TOP=682.40  
18" INV=679.19  
15" INV=679.53

APPROX. LOCATION  
EX. 4" GAS

PERPETUAL RIGHT  
OF WAY ESMT  
VOL.124, PG.43

PROPOSED STORM  
EASEMENT

10' ROADWAY &  
UTILITY EASEMENT

EASEMENT FOR  
HIGHWAY PURPOSE  
VOL.187, PG.86

EASEMENT FOR  
HIGHWAY PURPOSE  
VOL.187, PG.86

SCOTT ST.

SIGNAL POLES/POLE BOXES/PEDESTALS  
(BY OTHERS; REFER TO SIGNALIZATION PLANS)

DESIGN WITH NAME?  
ENR. STAMP?

SIGNAGE

Storm Sewer Drainage  
Area Map

5/10/01

PAVEMENT SPECIFICATIONS  
(MIN. 4" TOTAL COMPACTED ASPHALT THICKNESS)

PARKING LOT

TYPE A C & D

CONC. APRON

McV. ENGINEER RESERVES THE RIGHT TO REQUEST A COMPACT-  
TION AND/OR A CORE SAMPLE, IF TESTS PROVE CORRECT.  
FOR ABOVE SPEC. TESTS WILL BE AT THE EXPENSE OF  
McV. OTHERWISE, G.C. WILL BE CHARGED.



SITE  
GRADING/UTILITIES  
C2

SITE DATA  
MCDONALD'S RESTAURANT  
SCOTT STREET  
NAPOLEON, OHIO  
HENRY CO.

PARKING DATA

34	Spaces @ 75' = 9' x 20'
17	Spaces @ 60' = 9' x 20'
03	Spaces @ 90' = 9'-6" x 20'
03	Spaces @ 75' = 9' x 20' HC
57	TOTAL

BLDG SQUARE FOOTAGE 3,989  
SITE LOCATION # 34-1689  
BLDG. TYPE 43-79 RB

KEY TO BLDG. TYPE CODE

BASE BLDG	STND. 7' REAR ADDITION
STND. 12' FRONT ADDITION	BAY WINDOW
PLAYPLACE	

43-79RFBP

APPROVALS	INITIAL DATE
DRW. BY / ISSUE DATE	DA 1.01
PROJECT MANAGER	
REGIONAL MANAGER	
CONSTRUCTION MANAGER	
REAL ESTATE MANAGER	







REV	DATE	DESCRIPTION	BY
1	2.13.01	ISSUING FOR CONSTRUCTION	JK
2	3.03.01	REVISED TO SHOW CHANGES	JK
3	3.14.01	REVISED FOR CONSTRUCTION	JK

SCALE: 1" = 20'  
 VAN ATTA ENG. INC. - 245 W. ELMWOOD DR. - CHICAGO, ILL. 60608 - 1.01

INGRESS/EGRESS EASEMENT HERITAGE TOWNE CENTER SLIDE 266A & B

R=20.00'  
 I=90°00'00"  
 A=31.42'  
 Lch=N44°59'49"E  
 ~28.28'

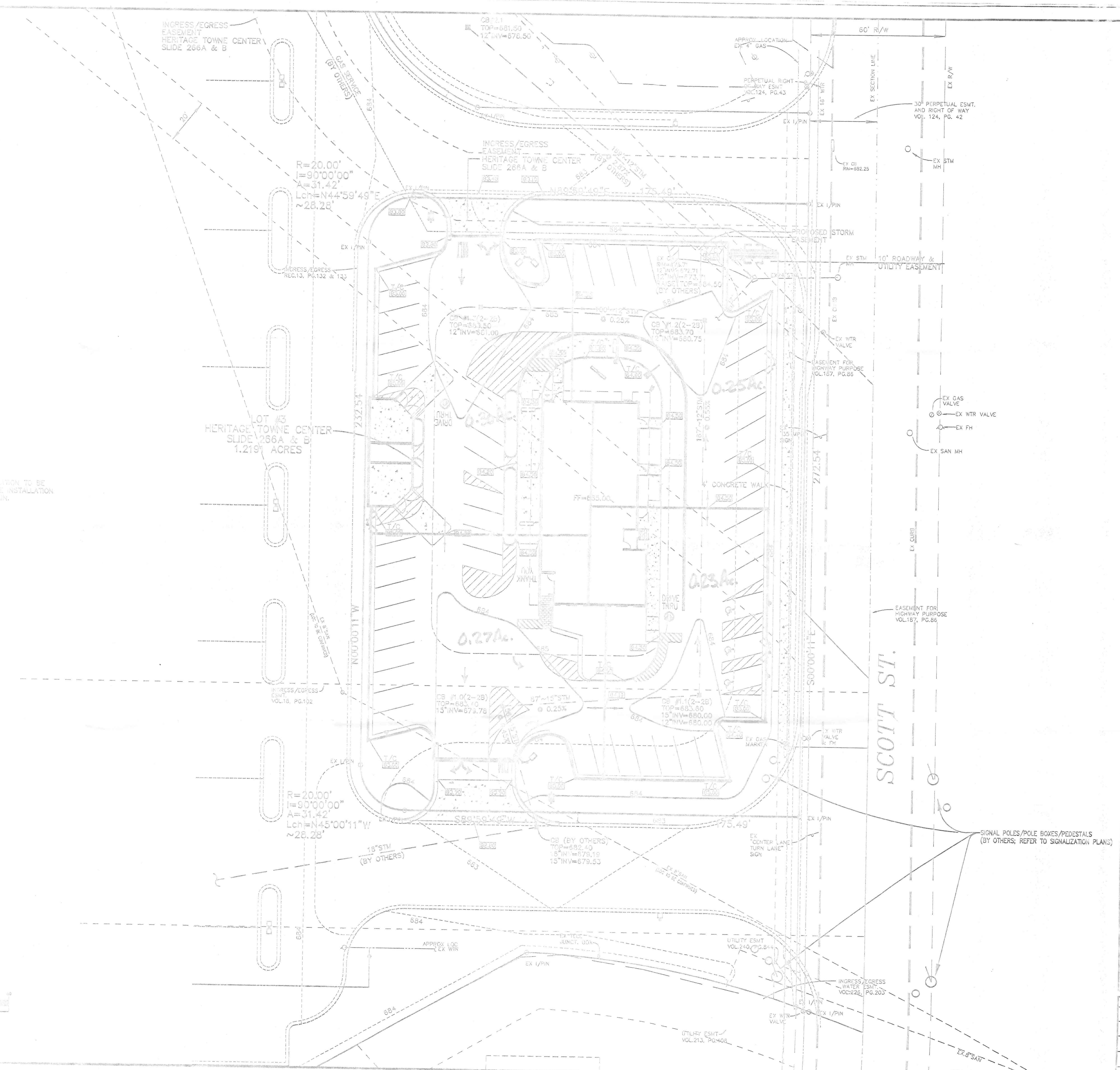
LOT #3 HERITAGE TOWNE CENTER SLIDE 266A & B 1.219 ACRES

NOTE: STORM SEWER INSTALLATION TO BE COORDINATED WITH THE INSTALLATION OF THE 18" STORM MAIN.

R=20.00'  
 I=90°00'00"  
 A=31.42'  
 Lch=N45°00'11"W  
 ~28.28'

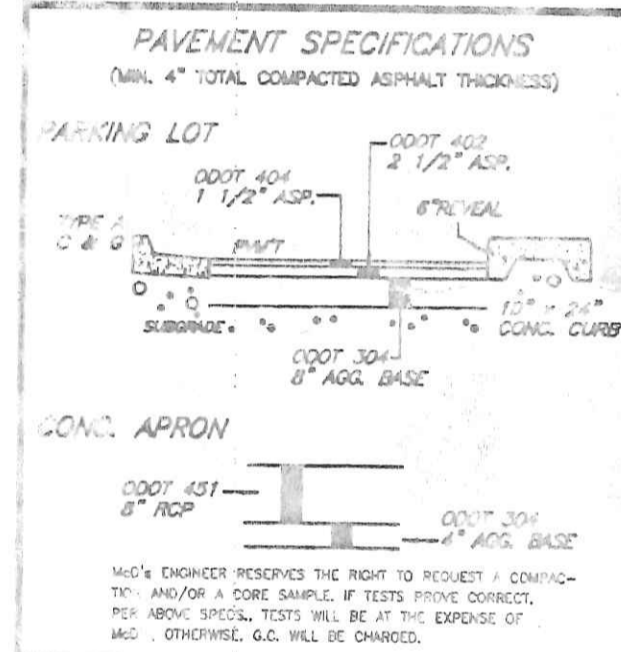


G:\PROJECTS\2001\200105\20010501\20010501.dwg, 10:10, 5/10/01, JK



STORM SEWER DRAINAGE AREA MAP

5/10/01



**SITE GRADING/UTILITIES C2**

**SITE DATA**  
 McDONALD'S RESTAURANT  
 SCOTT STREET  
 NAPOLEON, OHIO  
 HENRY CO.

**PARKING DATA**

24 Spaces @ 75' = 9' x 20'
17 Spaces @ 60' = 9' x 20'
03 Spaces @ 90' = 9'-6" x 20'
03 Spaces @ 75' = 9' x 20' HC
<b>57 TOTAL</b>

**BLDG SQUARE FOOTAGE 3,989**  
**SITE LOCATION # 34-1689**  
**BLDG. TYPE 43-79 RB**

**KEY TO BLDG. TYPE CODE**

BASE BLDG	STND. 7' REAR ADDITION
STND. 12' FRONT ADDITION	BAY WINDOW
43-79RFBP	PLAYPLACE

APPROVALS	INITIAL DATE
DRW. BY / ISSUE DATE	DA 1.01
PROJECT MANAGER	
REGIONAL MANAGER	
CONSTRUCTION MANAGER	
REAL ESTATE MANAGER	